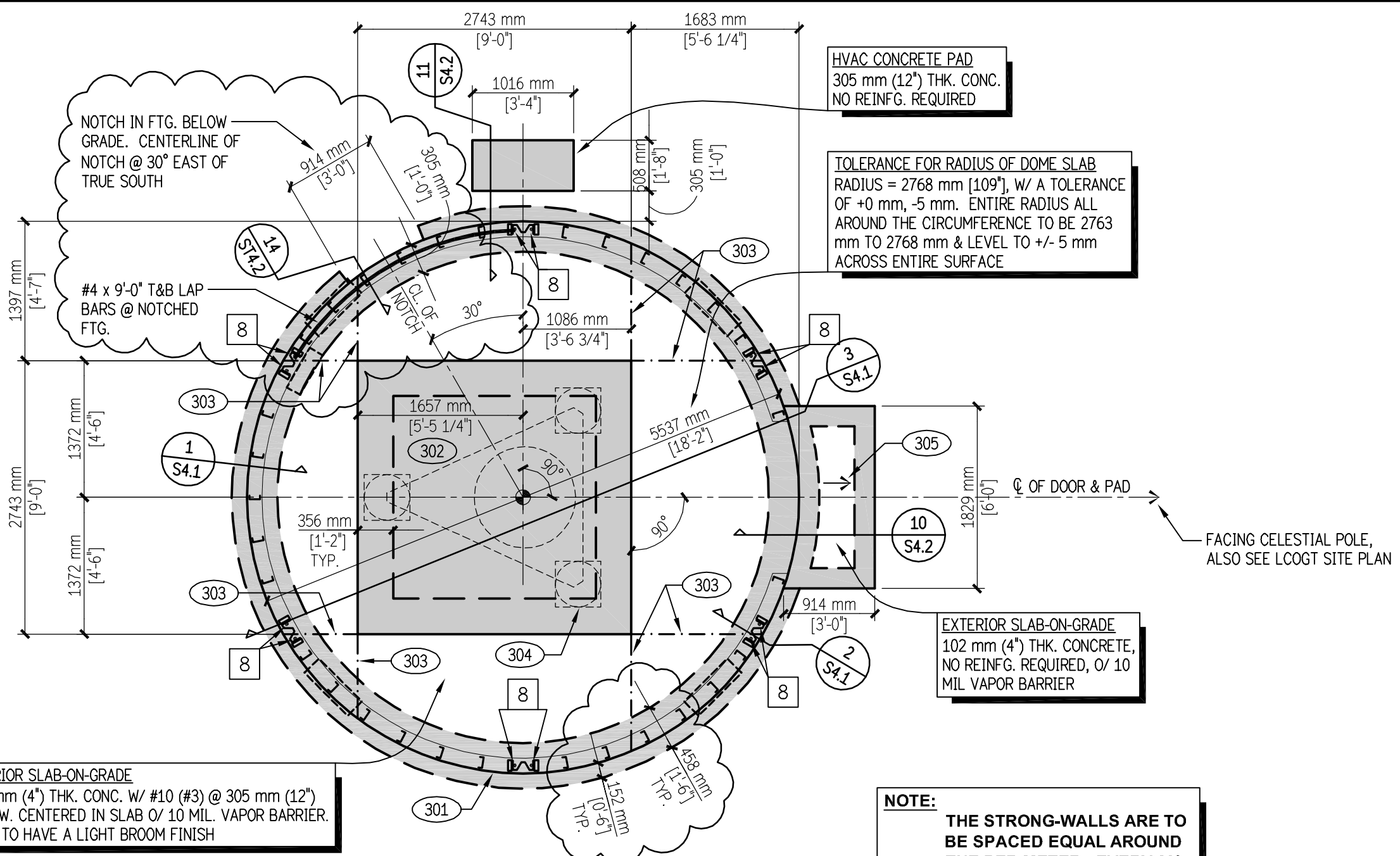


ALL DIMENSIONS ARE CENTER-TO-CENTER UNLESS NOTED OTHERWISE

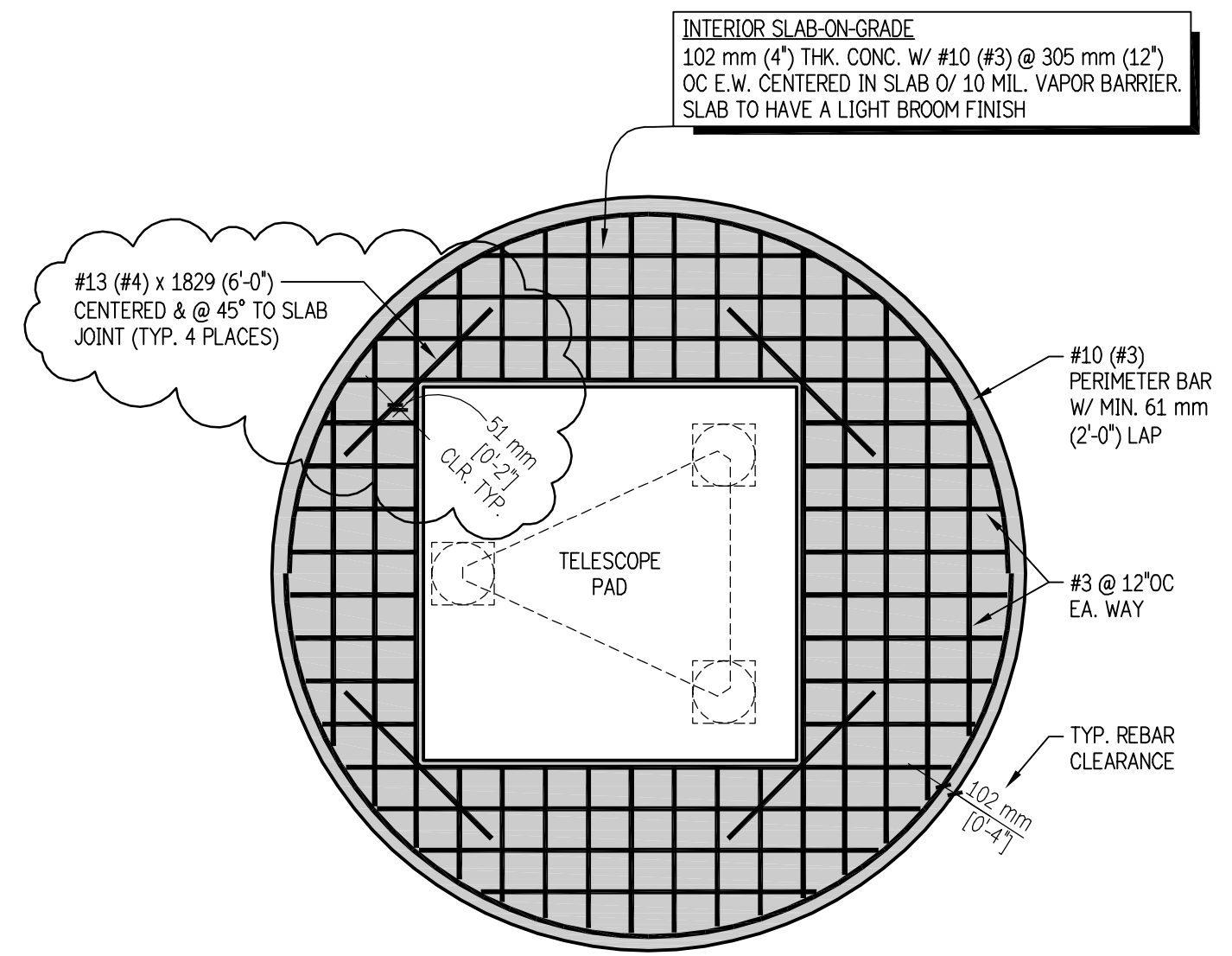
TELESCOPE ANCHORS
REBAR PLACEMENT SHALL
AVOID ANCHOR LOCATIONS
AS DIMENSIONED - SEE
TELESCOPE MOUNTING PLAN
ON THIS SHEET FOR MORE INFO



HVAC CONCRETE PAD
305 mm (12") THK. CONC.
NO REINFG. REQUIRED

TOLERANCE FOR RADIUS OF DOME SLAB
RADIUS = 2768 mm (109'), W/ A TOLERANCE
OF +0 mm, -5 mm. ENTIRE RADIUS ALL
AROUND THE CIRCUMFERENCE TO BE 2763
mm TO 2768 mm & LEVEL TO +/- 5 mm
ACROSS ENTIRE SURFACE

NOTE:
THE STRONG-WALLS ARE TO
BE SPACED EQUAL AROUND
THE PERIMETER - EVERY 60°



INTERIOR SLAB-ON-GRADE
102 mm (4") THK. CONC. W/ #10 (#3) @ 305 mm (12")
OC E.W. CENTERED IN SLAB O/ 10 MIL. VAPOR BARRIER.
SLAB TO HAVE A LIGHT BROOM FINISH

EXTERIOR SLAB-ON-GRADE
102 mm (4") THK. CONC.
NO REINFG. REQUIRED, O/ 10
MIL VAPOR BARRIER

#10 (#3) PERIMETER BAR
W/ MIN. 61 mm
(2'-0") LAP
#3 @ 12" OC
EA. WAY
TYP. REBAR
CLEARANCE

A REBAR PLAN FOR 1.0M TELESCOPE PAD 1/4"=1'-0"

B FOUNDATION PLAN FOR 1.0M TELESCOPE ENCLOSURE 1/4"=1'-0"

C SLAB-ON-GRADE REBAR PLAN FOR 1.0M TELESCOPE ENCLOSURE 1/4"=1'-0"

FOUNDATION KEY NOTES	
⊕	- CENTER OF DOME
301	- CONTINUOUS FOOTING W/ (2) #13 (#4) T&B
302	- FND. FOR TELESCOPE (SHADED), W/ 1" FOAM BOARD ISOLATION JOINT, TYP. ALL AROUND PER [3/54.1] O/ 10 MIL. VAPOR BARRIER
303	- CRACK CONTROL JOINTS PER [1/52.1]
304	- 1" FOAM BOARD ISOLATION JOINT BETWEEN INTERIOR SLAB-ON-GRADE & TELESCOPE PAD
305	- SLOPE SLAB @ 3mm PER 305mm MIN. [1/8" PER FT.] - SEE [10/54.2]
306	- DECK MOUNT TWISTLOCK PER [4/54.1]
307	- 203 mm (8") CONC. SLAB-ON-GRADE W/ #13 (#4) @ 305 mm (12") ON CENTER EA. WAY, CENTERED IN SLAB O/ 10 MIL. VAPOR BARRIER
308	- 1-1/2" VERTICAL CHAMFER, TYP.

HOLDOWN SCHEDULE	
NOTE: ALL HOLDOWNS ON FRAMING PLANS ARE TO FLOOR ABOVE. ALL HOLDOWNS ON THE FOUNDATION PLAN ARE INTO THE FOUNDATION.	
ANCHORAGE IN CONCRETE (SEE DETAILS F/S2.1, G/S2.1, AE/S2.2, OR AF/S2.2)	
HD #	ANCHOR INFO
8	A 19 mm (3/4") A307 THREADED ROD HOLDOWN ANCHOR BOLTS EPOXIED INTO A HOLE 3 mm (1/8") LARGER THAN THE ANCHOR DIAMETER, W/ SIMPSON SET-XP ADHESIVE (OR EQUIV.) PER D/S1.1
	19 mm (3/4") Ø = 16,090 kg (7,300 lbs.) EPOXY DEPTH = 152 mm (6") SEE [3/54.1]
NOTE: 1. REFER TO THE TYPICAL HOLDOWN DETAILS ON SHEET S2.1 FOR ADDITIONAL INFO.	

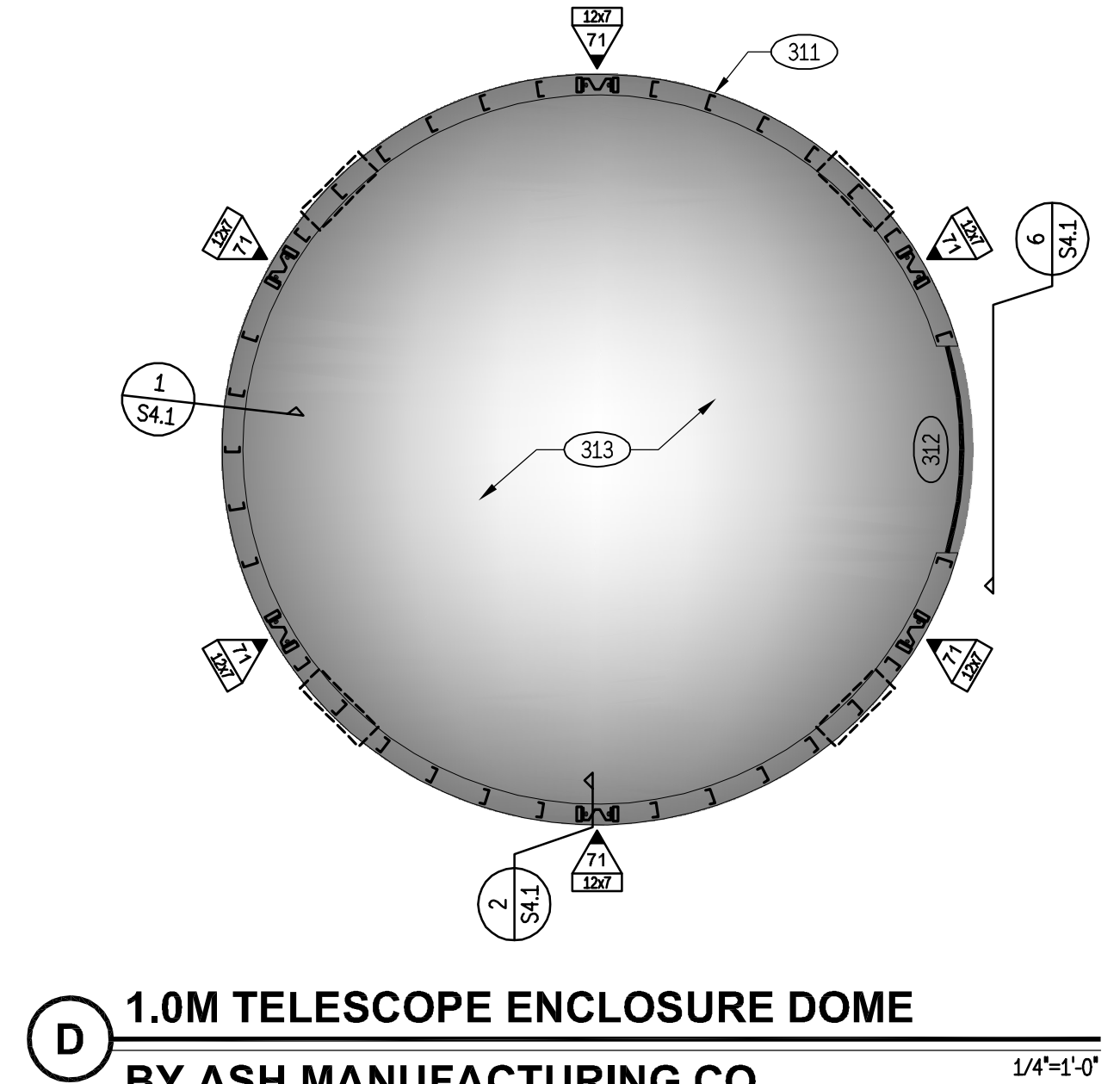
GENERAL FOUNDATION NOTES	
1.)	ALL ANCHOR BOLTS AND HOLDOWNS ARE TO BE DRILLED & EPOXIED INTO SLAB/FOUNDATION MIN. 7 DAYS AFTER THE CONCRETE IS POURED.
2.)	GENERAL SILL PLATE ANCHOR BOLTS: USE 16 mm (5/8") Ø ANCHOR BOLTS W/ 6 mm (1/4") THICK x 76 mm (3") SQ. PL. WASHERS (PARALLEL TO SILL PL.) AT 813 mm (32") OC, TYP. UNO. SEE DETAIL [V/S2.1]. a.) BPS5/8-3 & BPS5/8-3 BY SIMPSON (OR EQUIV.) ARE TWO APPROVED BEARING PLATES. b.) IF A.B. HOLE IS OVER-DRILLED, USE BPS5/8-SKT. c.) "J" OR "L" SHAPED ANCHOR BOLTS ARE NOT ALLOWED
3.)	SEE HOLDOWN DETAILS ON S2.1 FOR ADD. INFORMATION ON HOLDOWN INSTALLATION.
4.)	CONT. FOOTINGS TO BE REINFORCED W/ (2) #13 (#4) T&B & THE DEPTH OF FOOTING IS TO BE 457 mm (18") BELOW FINISHED GRADE, TYP. U.N.O.

SHEAR WALL SCHEDULE		
SYM.	WALL PANEL & NAILING	SHEAR TRANSFER ALLOWABLE SHEAR & NOTES
71	SIMPSON STEEL STRONG-WALL S/S5SW12x7	TOP OF WALL: (4) SDS 6 mm (1/4") x 89 mm (3-1/2") V _r = 1230 PLF ① LTP4 @ 153 mm (6") OC ② LTP4 @ 153 mm (6") OC BOTT. OF WALL: (2) 19.05 MM (3/4") Ø A307 A.B.'S
ALTERNATE: HARDY FRAME HFX-12X78 W/ (7) SDS 6 mm x 76 mm (3") SCREWS @ TOP & (2) 29 mm (1-1/8") Ø A307 A.B.'S		

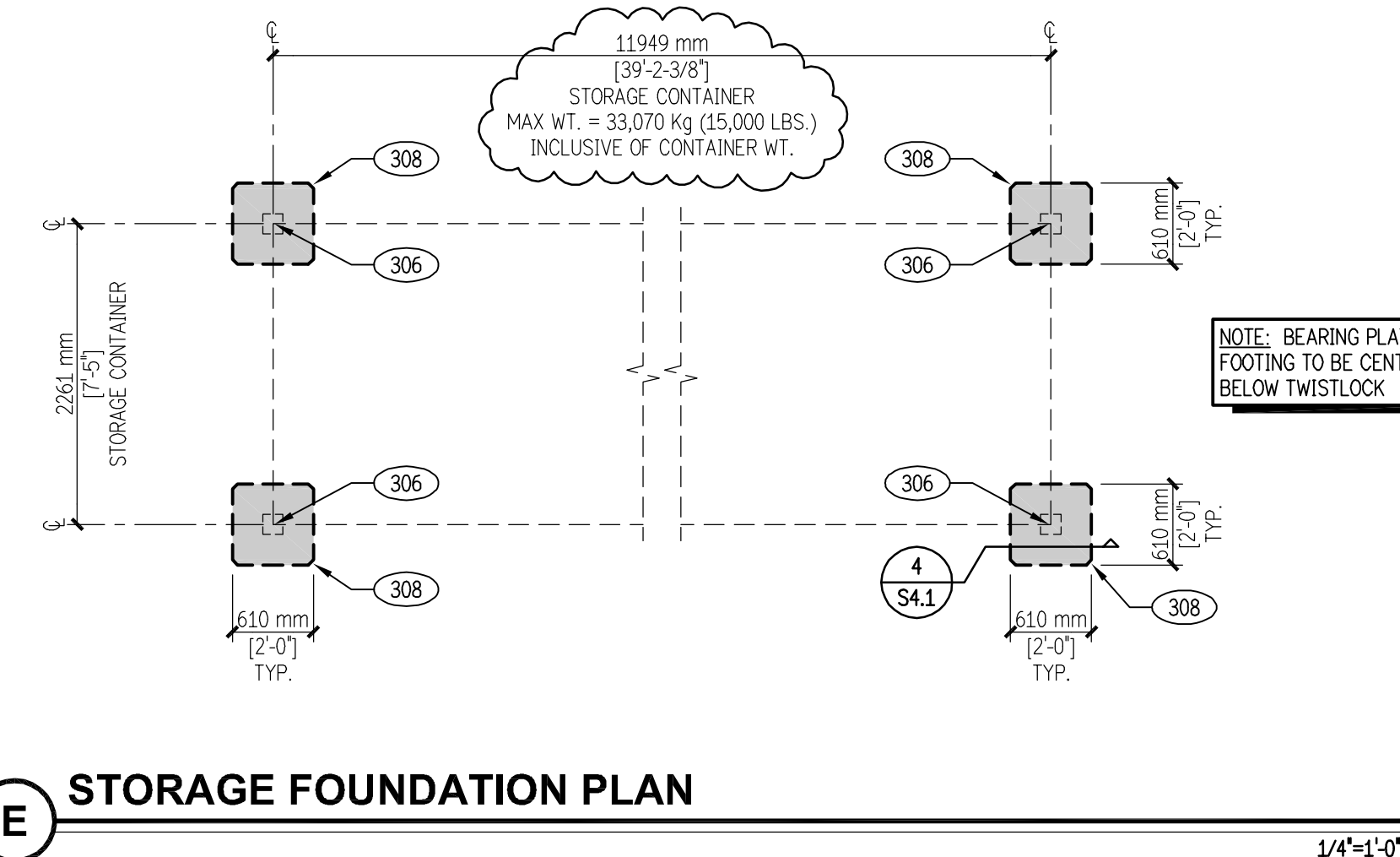
NOTE:
FOR ALL DIMENSIONS AND REBAR SIZE CALL-OUTS ON THESE PLANS, THE FIRST NUMBER IS THE SI METRIC UNIT AND THE SECOND NUMBER (IN PARENTHESES) IS THE U.S. CUSTOMARY UNIT.

METRIC DIMENSION → U.S. CUSTOMARY DIMENSION
eg. DIMENSIONS: 305mm (12")

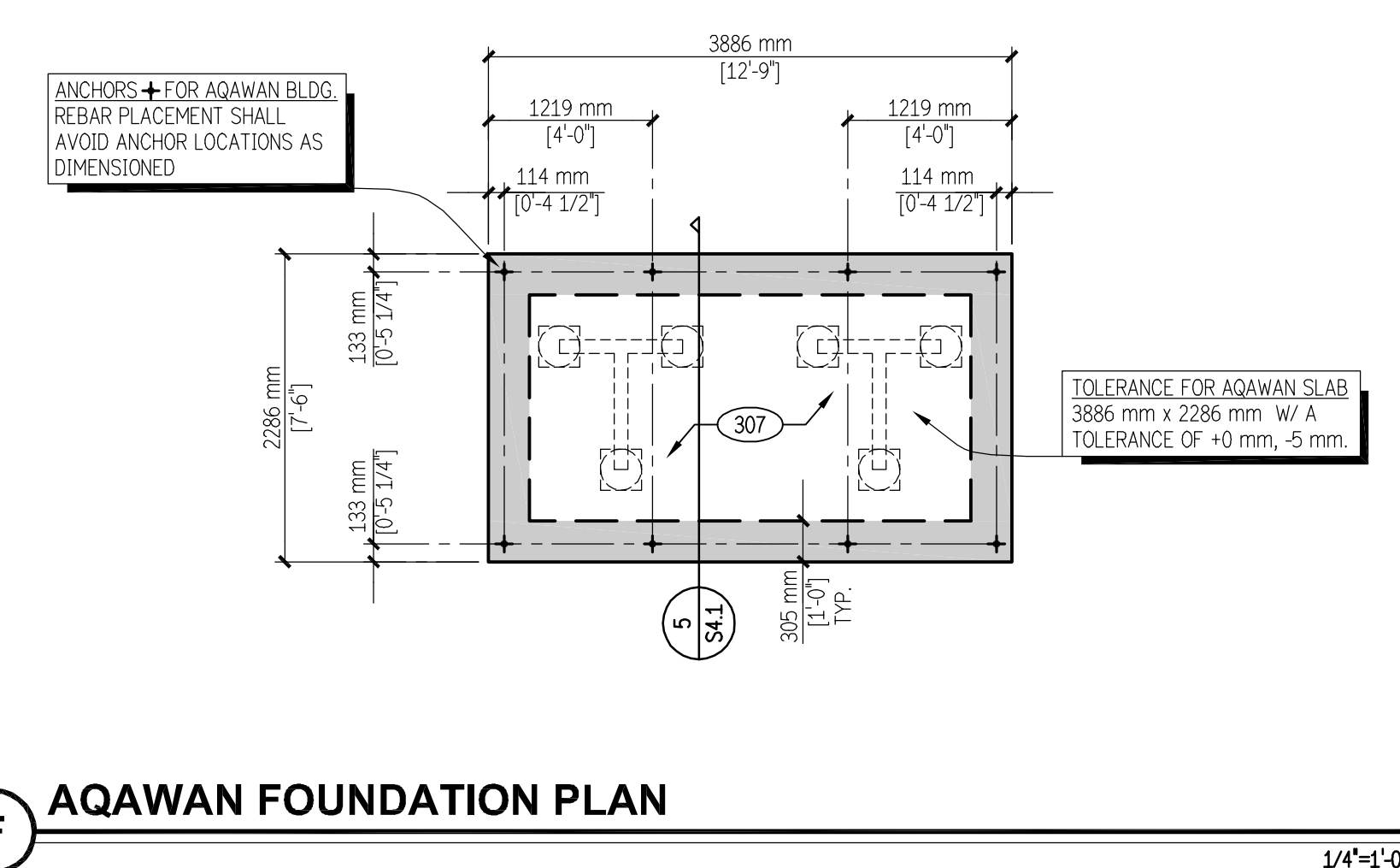
METRIC REBAR SIZE → U.S. CUSTOMARY REBAR SIZE
REBAR CALLOUTS: #10 (#3)



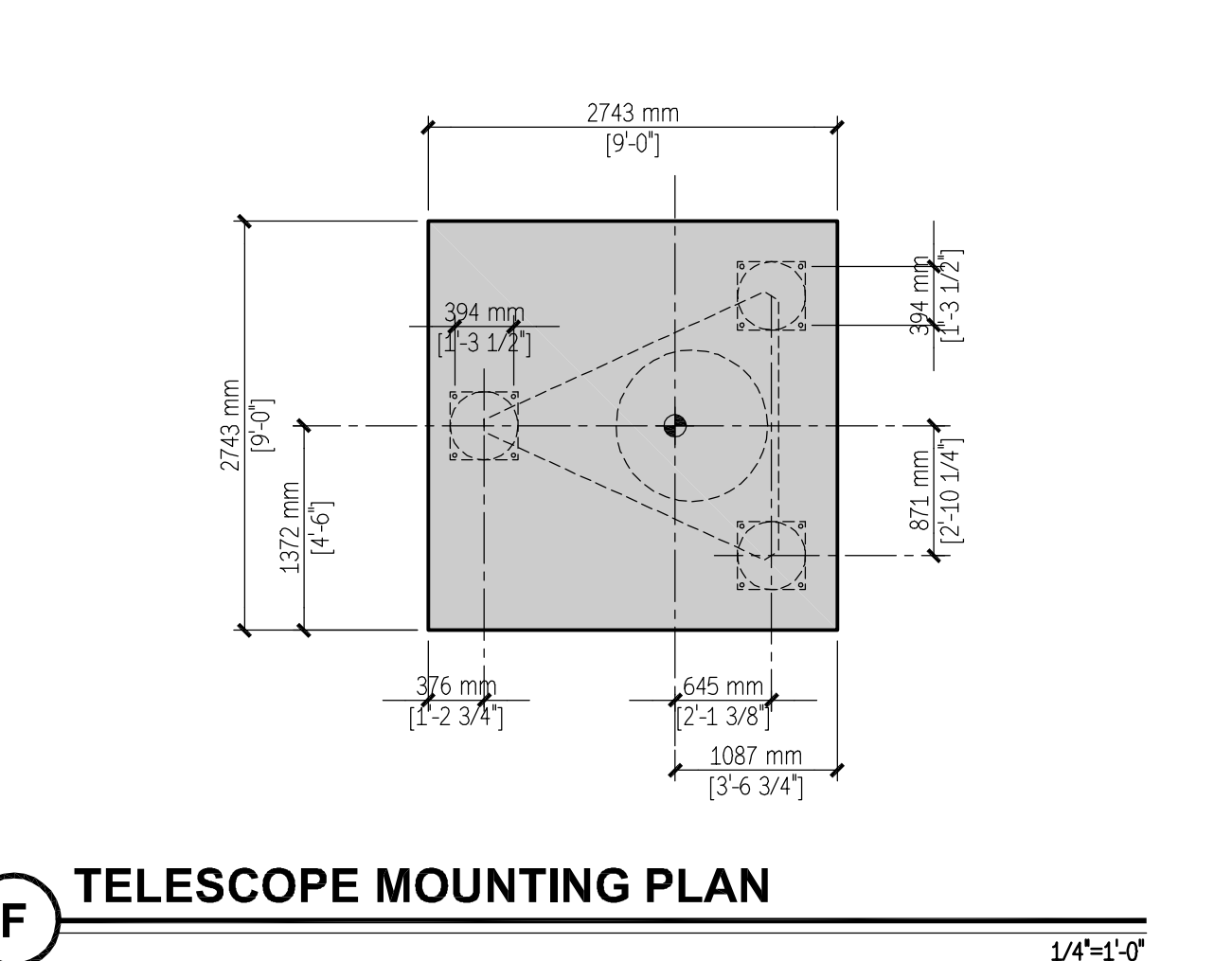
D 1.0M TELESCOPE ENCLOSURE DOME BY ASH MANUFACTURING CO. 1/4"=1'-0"



E STORAGE FOUNDATION PLAN 1/4"=1'-0"



F AQAWAN FOUNDATION PLAN 1/4"=1'-0"



F TELESCOPE MOUNTING PLAN 1/4"=1'-0"



DATE: 05/18/2011
DRAWN BY: TC
CHECKED BY: MPJ
APPROVED BY:

PROJECT TEAM	
ARCHITECT	
STRUC. ENGR.	
MECH. ENGR.	
ELEC. ENGR.	
INT. DESIGNER	
DRFT. TECH.	
CONS. INSP.	
OTHER	

REVISIONS	
NO.	DESCRIPTION

PROJECT MANAGER
PHASE
CLIENT APPROVAL
DATE

LCOGT FACILITIES AT
MCDONALD OBSERVATORY
PROJECT MANAGEMENT & CONSTRUCTION SERVICES
PROJECT SUPPORT

PROJECT MANAGER
PHASE
CLIENT APPROVAL
DATE



SEAL:
PROJECT NUMBER:

SHEET:
ST3.1